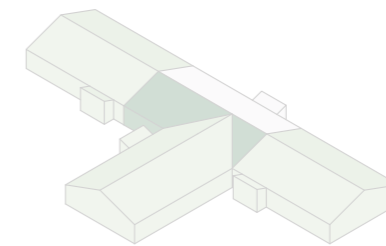
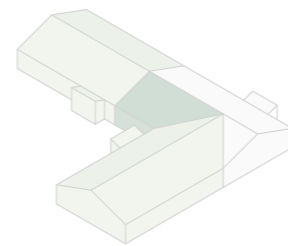
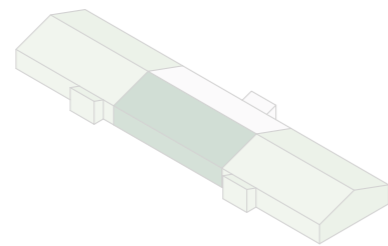
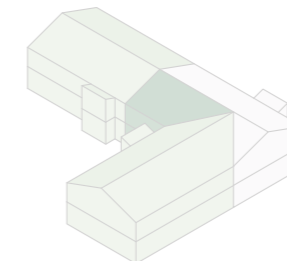
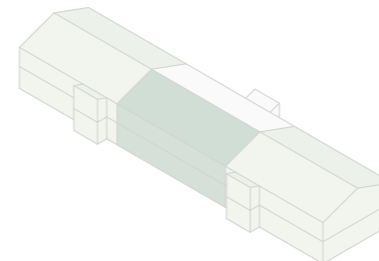
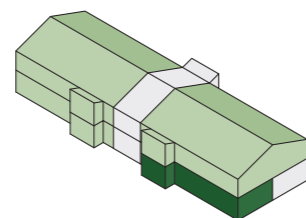


# Koncepttyp C



C  
BTA 1379 (max 1400 kvm)  
3 enheter i två våningar



# Plan Koncepttyp C

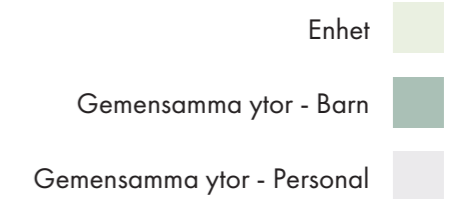


Plan 1

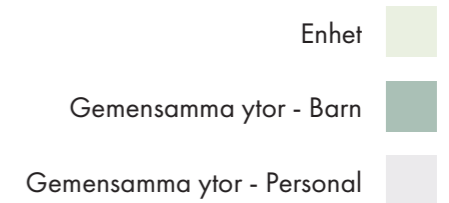
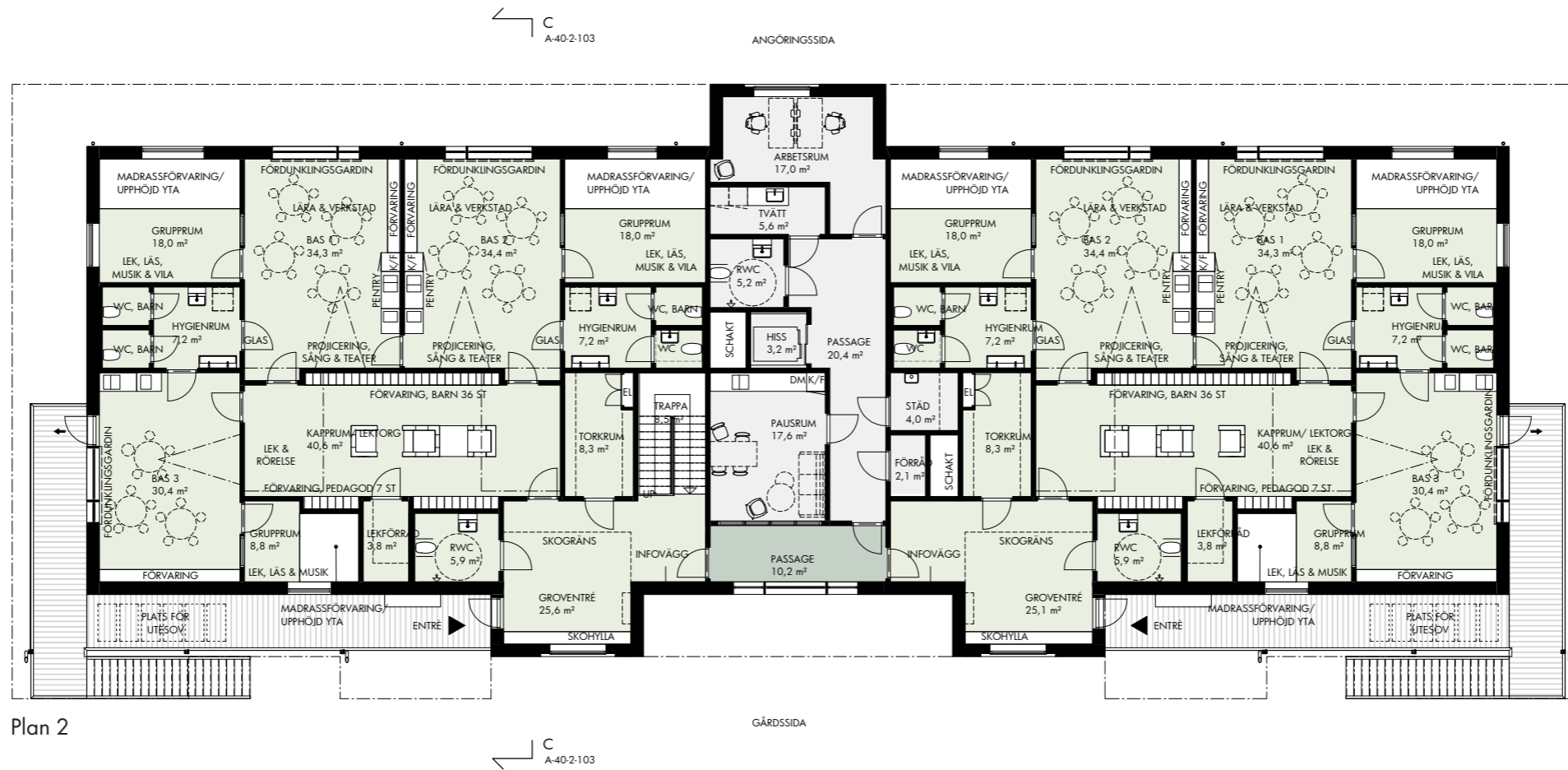
BTA: 1379 kvm (max 1400)  
 BRA (A-temp): 1275 kvm  
 LOA: 1215 kvm  
 BYA: 809 kvm

Pedagogisk yta: 642 kvm (min 510)  
 Barnyta: 892 kvm  
 Yta per barn: 11,8 kvm  
 (BRA / barn)

Enheter: 3 st  
 Baser: 6 - 9 st  
 Antal barn: 80-120 st  
 Personal: 21 st



# Plan Koncepttyp C



**Fasadvy**  
Koncepttyp C



Koncepttyp C. Fasadvy från gårdsida

# Sektion C-C

Principsektion, Koncepttyp C och D

