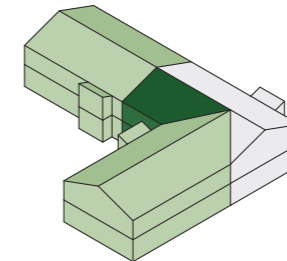
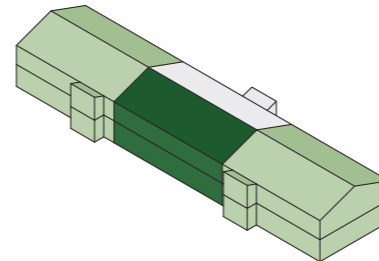
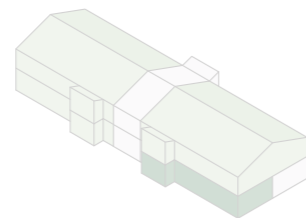
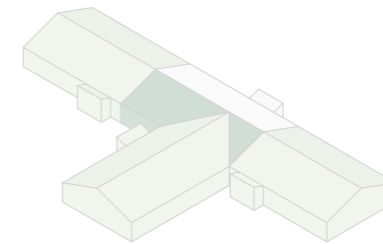
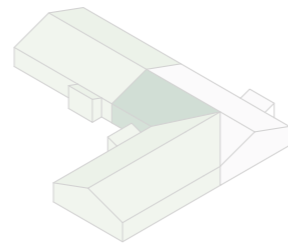
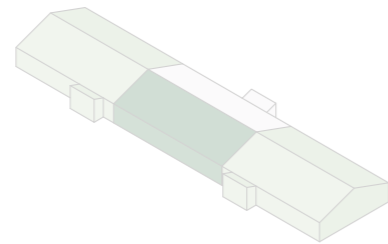


Koncepttyp D

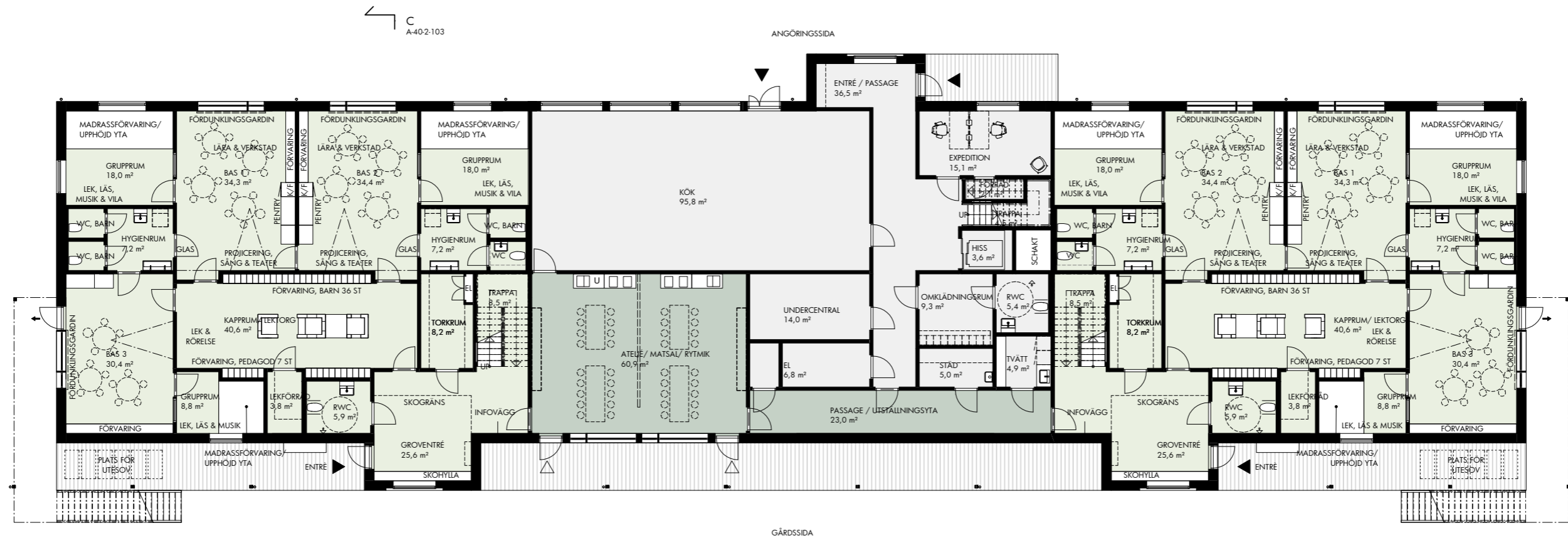


D alt. 1
BTA 1845 (max 1870 kvm)
4 enheter i två våningar

D alt. 2
BTA 1869 (max 1870 kvm)
4 enheter i två våningar

Plan

Koncepttyp D alt. 1

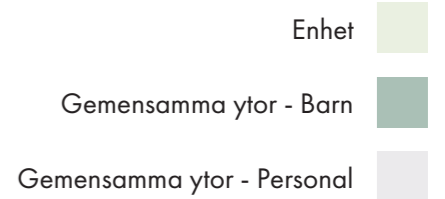


Plan 1

BTA: 1845 kvm (max 1870)
 BRA (A-temp): 1714 kvm
 LOA: 1643 kvm
 BYA: 1075 kvm

Pedagogisk yta: 860 kvm (min 680)
 Barnyta: 1201 kvm
 Yta per barn: 11,9 kvm
 (BRA / barn)

Enheter: 4 st
 Baser: 8-12 st
 Antal barn: 144 st
 Personal: 28 st



Plan

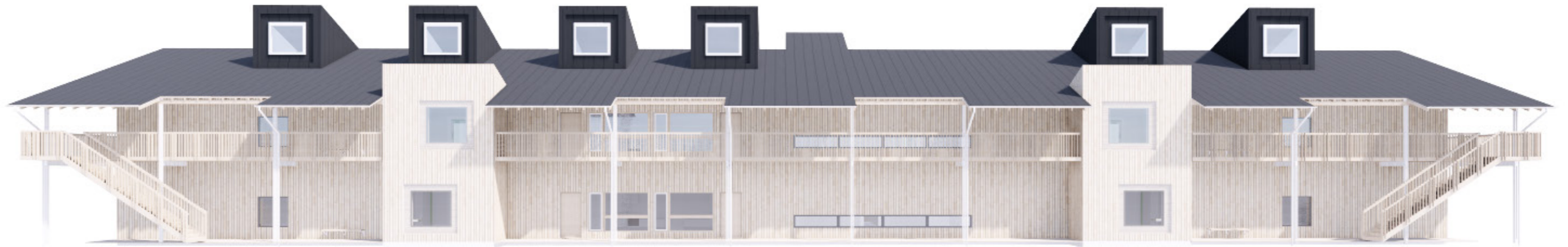
Koncepttyp D alt. 1



Plan 2

A-40-2-103

Fasadvy
Koncepttyp D alt. 1



Koncepttyp D alt. 1, Fasadperspektiv från gårdsida

Sektion C-C

Principsektion, Koncepttyp C och D

